

# IF WE MISS THIS OPPORTUNITY, WE MAY NEVER AGAIN GET ANOTHER CHANCE

The Columbia Gorge is a magnificent place like nowhere else in the world. While it attracts nature lovers, it also attracts developers and corporate interests that could forever change its natural wonder. Time and again, ordinary people have taken extraordinary steps to protect this place, making a difference that we all enjoy today. Beacon Rock, Multnomah Falls, Rowena Point, and other iconic places throughout the Gorge would not be what we know and love today, if people had not stepped up to protect them when they had the chance.

This is our opportunity to follow in their footsteps and leave our own legacy with the preservation of seven properties - 420 acres of magnificent Gorge land. These lands preserve beautiful views, protect wildlife, and provide more places for people to take solace in nature.

Please join us! Create *your* legacy by making a generous donation to the *Preserve the Wonder* campaign.

For the Gorge,

*Debbie Asakawa*  
**Debbie Asakawa**  
 Campaign Co-chair

*Gwen Farnham*  
**Gwen Farnham**  
 Campaign Co-chair

*Kevin Gorman*  
**Kevin Gorman**  
 Executive Director



## GORGE TOWNS TO TRAILS

We have set forth a bold vision to create a loop hiking trail system around the entire Columbia River Gorge National Scenic Area. This concept of connecting trails to communities, offering the possibility of multi-day trekking excursions, and creating critical wildlife corridors has received enthusiastic and broad community support. Funds from the campaign will help purchase critical pieces of land for trail connections, while also supporting outreach to community leaders, elected officials, and local businesses.

## LAND STEWARDSHIP

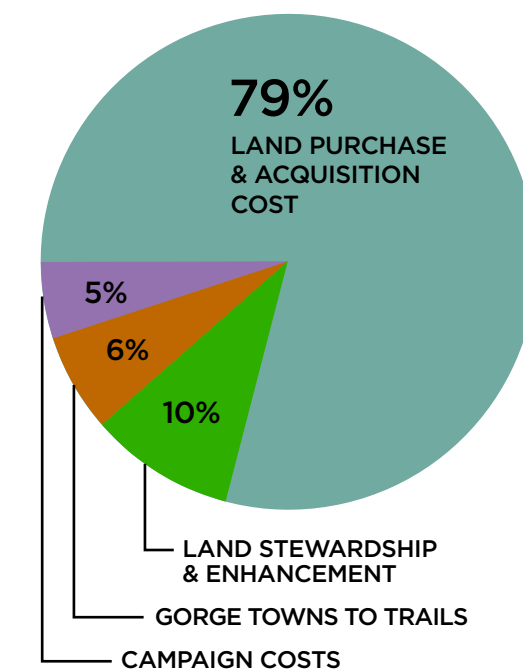
Acquiring these lands might be the most exciting part of this campaign, but stewardship might be the most important to ensure the lands will continue to be valuable to people and wildlife. Each property comes with its own unique opportunities and challenges to restore and manage. In some cases, trails will be built or enhanced to make a better experience for the public. In other cases, outbuildings and rubbish need to be removed. Some properties may need a plan to remove noxious weeds.

## CAMPAIGN FUNDING

The Preserve the Wonder campaign is our most ambitious land conservation effort to date, aiming to acquire and preserve seven unique properties totaling more than 420-acres along the Washington side of the Gorge. To do so, Friends aims to raise \$5.5 million to fund land acquisition, stewardship, Gorge Towns to Trails, and related outreach efforts through this land campaign. And the best news is that we're already more than halfway there, with \$3.5 million in support already received!

## LEARN MORE

Visit [PreserveTheWonder.com](http://PreserveTheWonder.com) to learn more about the campaign, view short videos highlighting each property, and make an online donation.



**Please give generously!** Contact Sandy Wright ([sandy@gorgefriends.org](mailto:sandy@gorgefriends.org) or 971-634-2027) to explore ways you can support this unique opportunity to preserve the wonder of the Gorge for many generations to come.

COVER PHOTO BY WARREN MORGAN. SEE WEBSITE FOR OTHER PHOTO CREDITS.

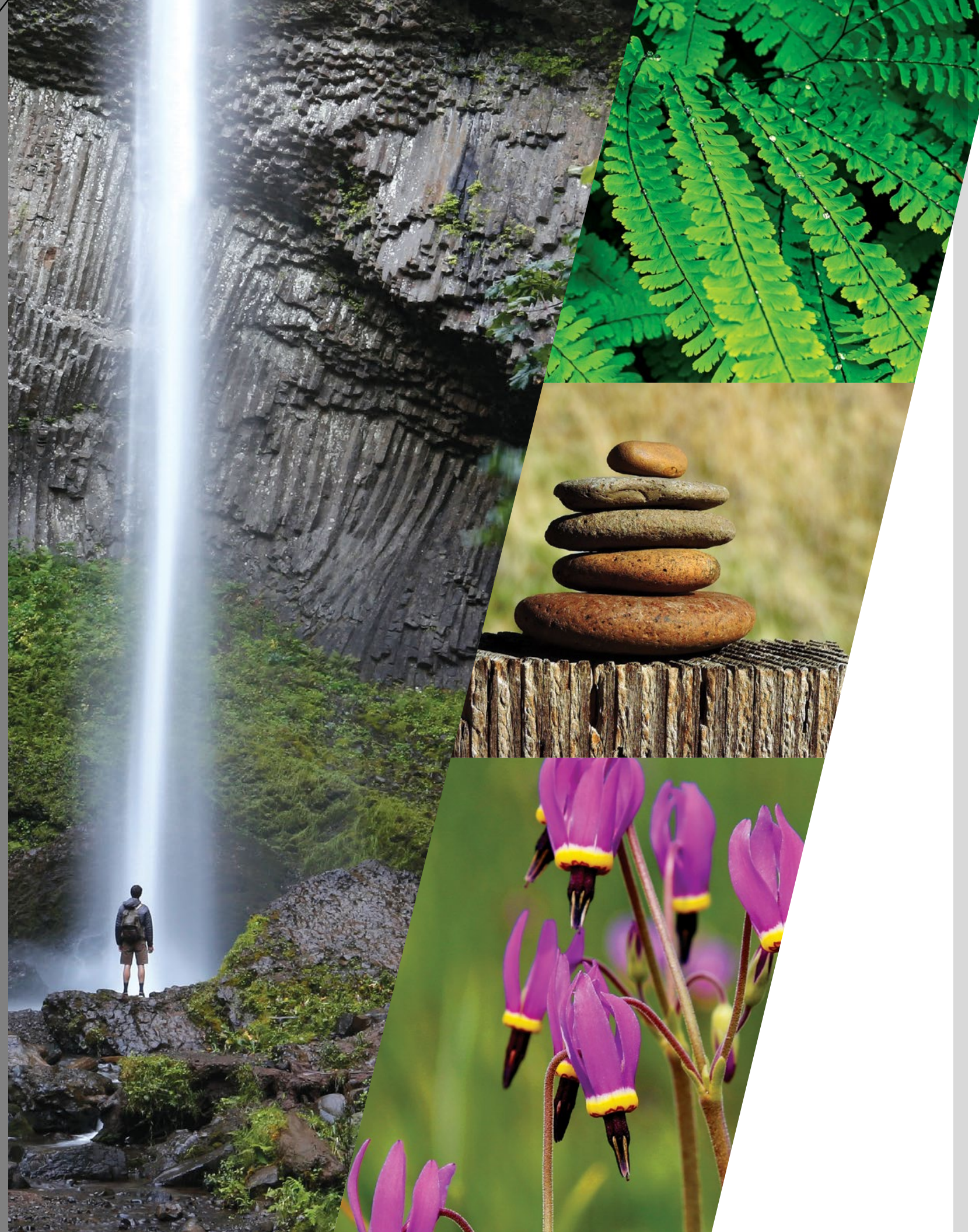
# PRESERVE *the Wonder*

A campaign to ensure the wild and wonderful Columbia Gorge endures for many generations to come.



PHOTO BY BRADY HOLDEN.  
 Campaign co-chairs Debbie Asakawa and Gwen Farnham, with Friends of the Columbia Gorge Executive Director Kevin Gorman at Catherine Creek, WA.





# IF WE MISS THIS OPPORTUNITY, WE MAY NEVER AGAIN GET ANOTHER CHANCE

The Columbia Gorge is a magnificent place like nowhere else in the world. While it attracts nature lovers, it also attracts developers and corporate interests that could forever change its natural wonder. Time and again, ordinary people have taken extraordinary steps to protect this place, making a difference that we all enjoy today. Beacon Rock, Multnomah Falls, Rowena Point, and other iconic places throughout the Gorge would not be what we know and love today, if people had not stepped up to protect them when they had the chance.

This is our opportunity to follow in their footsteps and leave our own legacy with the preservation of seven properties - 420 acres of magnificent Gorge land. These lands preserve beautiful views, protect wildlife, and provide more places for people to take solace in nature.

Please join us! Create *your* legacy by making a generous donation to the *Preserve the Wonder* campaign.

For the Gorge,

**Debbie Asakawa**  
Campaign Co-chair

**Gwen Farnham**  
Campaign Co-chair

**Kevin Gorman**  
Executive Director



PHOTO BY BRADY HOLDEN.

Campaign co-chairs Debbie Asakawa and Gwen Farnham, with Friends of the Columbia Gorge Executive Director Kevin Gorman at Catherine Creek, WA.





PHOTO BY DEBBIE ASAKAWA

### DUNCAN CREEK

50 acres

This woodland of Douglas fir sits between two large swaths of public land. Downstream is a magical land of moss, ferns, and cascading waterfalls. Purchase of this land protects it from logging and makes a 17-mile trail from Cape Horn to Beacon Rock possible.



PHOTO BY DEBBIE ASAKAWA

### CAPE HORN VISTA

58 acres

This beautiful property near the popular Cape Horn Trail blankets the side of a bluff and offers a magnificent view of the Gorge. The land is currently fenced off from hikers, routing them away from the expansive scenery of the Columbia River.



PHOTO BY MICHAEL J. HORODYSKI.

### UPLAND OAKS

55 acres

This lovely woodland on the hillside above Steigerwald Lake National Wildlife Refuge provides oak habitat that many migratory birds need. The Oregon white oak has been in decline, and Washington State lists it as a priority habitat to be protected.



PHOTO BY DEBBIE ASAKAWA

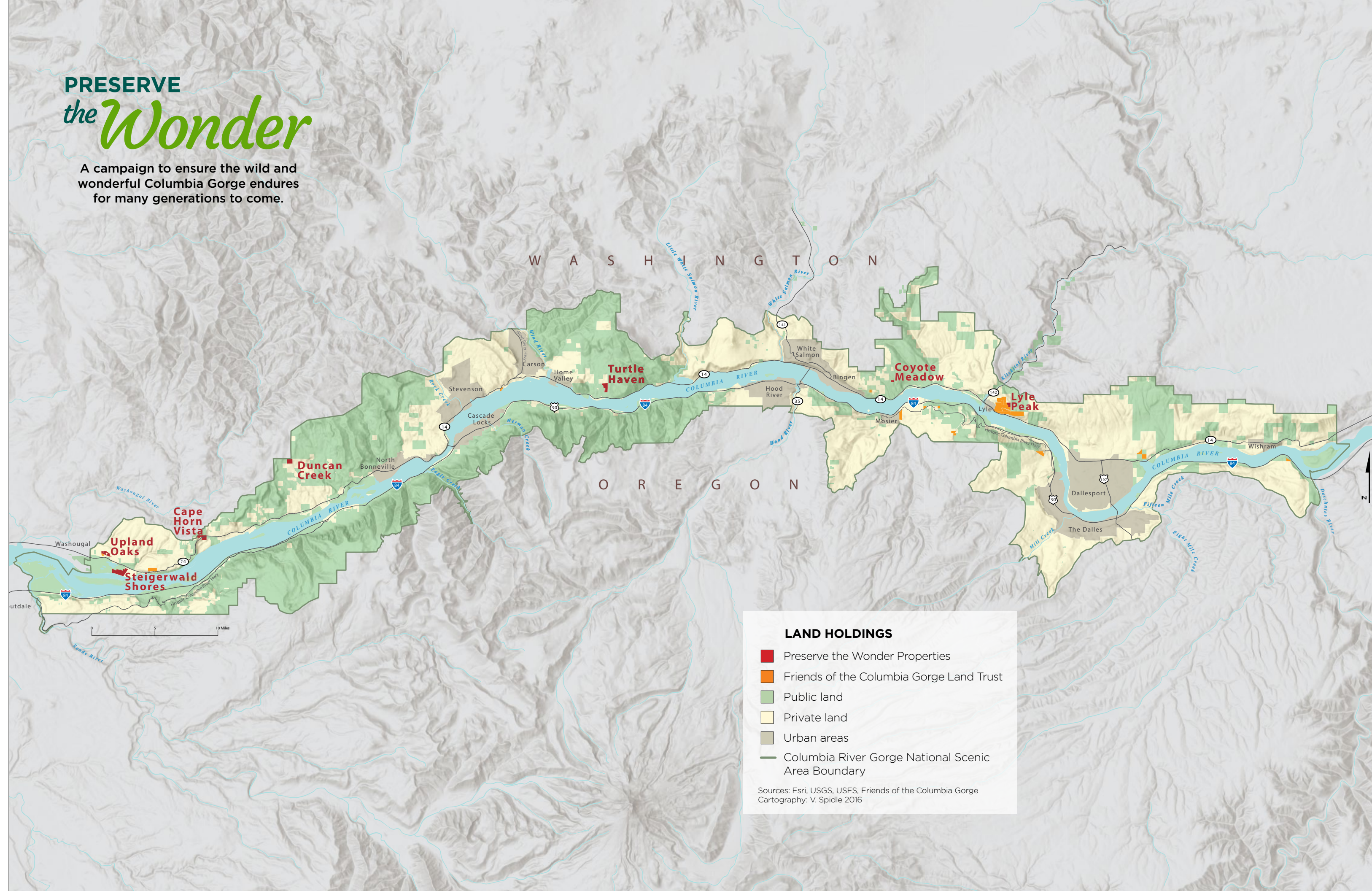
### STEIGERWALD SHORES

160 acres

The crown jewel of the campaign with nearly a mile of riverfront, and dramatic views of Crown Point and Mount Hood. It is adjacent to the Steigerwald Lake National Wildlife Refuge and provides a once-in-a-lifetime opportunity to expand the refuge by undertaking the largest habitat restoration project ever in the Columbia Gorge.

## PRESERVE *the Wonder*

A campaign to ensure the wild and wonderful Columbia Gorge endures for many generations to come.



**LAND HOLDINGS**

- Preserve the Wonder Properties
- Friends of the Columbia Gorge Land Trust
- Public land
- Private land
- Urban areas
- Columbia River Gorge National Scenic Area Boundary

Sources: Esri, USGS, USFS, Friends of the Columbia Gorge  
Cartography: V. Spidle 2016



PHOTO BY RYAN GALLAGHER

### COYOTE MEADOW

10 acres

This property is wooded with white oak and has views of the Mosier Plateau and Lyle Peak to the east. It is surrounded by the publicly managed lands of Coyote Wall and Catherine Creek, an area renowned for its hiking, mountain biking and wildflower photography.



PHOTO BY DEBBIE ASAKAWA

### LYLE PEAK

25 acres

This oak-covered land sits high above Friends' existing 550-acre Cherry Orchard property and near state land managed for the protection of the western gray squirrel. One day this land could also offer a trail with peek-a-boo views of the Gorge from one of the highest points in the Gorge.



PHOTO BY STAN HALL

### TURTLE HAVEN

64 acres

Adjacent to Dog Mountain, this land is a haven for western pond turtles. For more than 20 years, Washington Department of Fish & Wildlife and the Oregon Zoo have collaborated on restoration efforts to restore the endangered turtle population.



Balsamorhiza  
*Balsamorhiza*